



Knowledgebase > AX 2012 > AX 2012 FAQs > AX 2012 5.0.0.3 and Lasernet 10 Error: "The Remote Server Returned an Error: (404) Not Found."

## AX 2012 5.0.0.3 and Lasetnet 10 Error: "The Remote Server Returned an Error: (404) Not Found."

Alice Petruzzella - 2024-04-10 - Comments (0) - AX 2012 FAQs



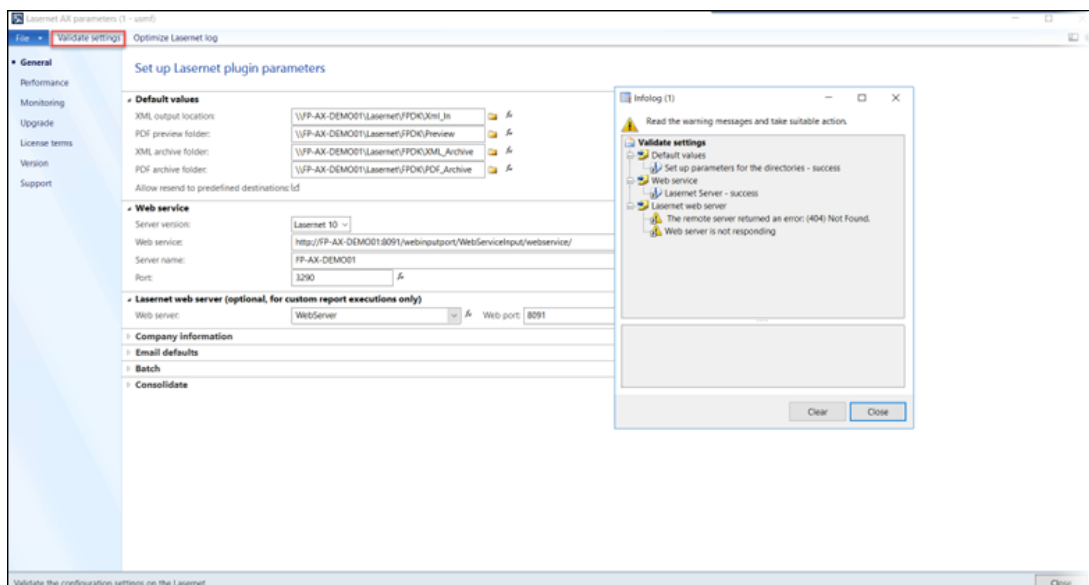
When clicking **Validate settings** in Lasetnet Connector for AX 2012 while using Lasetnet 10, the following error message might occur:

Error

Lasetnet Web server

The remote server returned an error: (404) Not Found.

Web server is not responding.



The **Web server** is an optional setting in AX 2012 while using Lasetnet 10. However, if it is configured improperly, this error will occur.

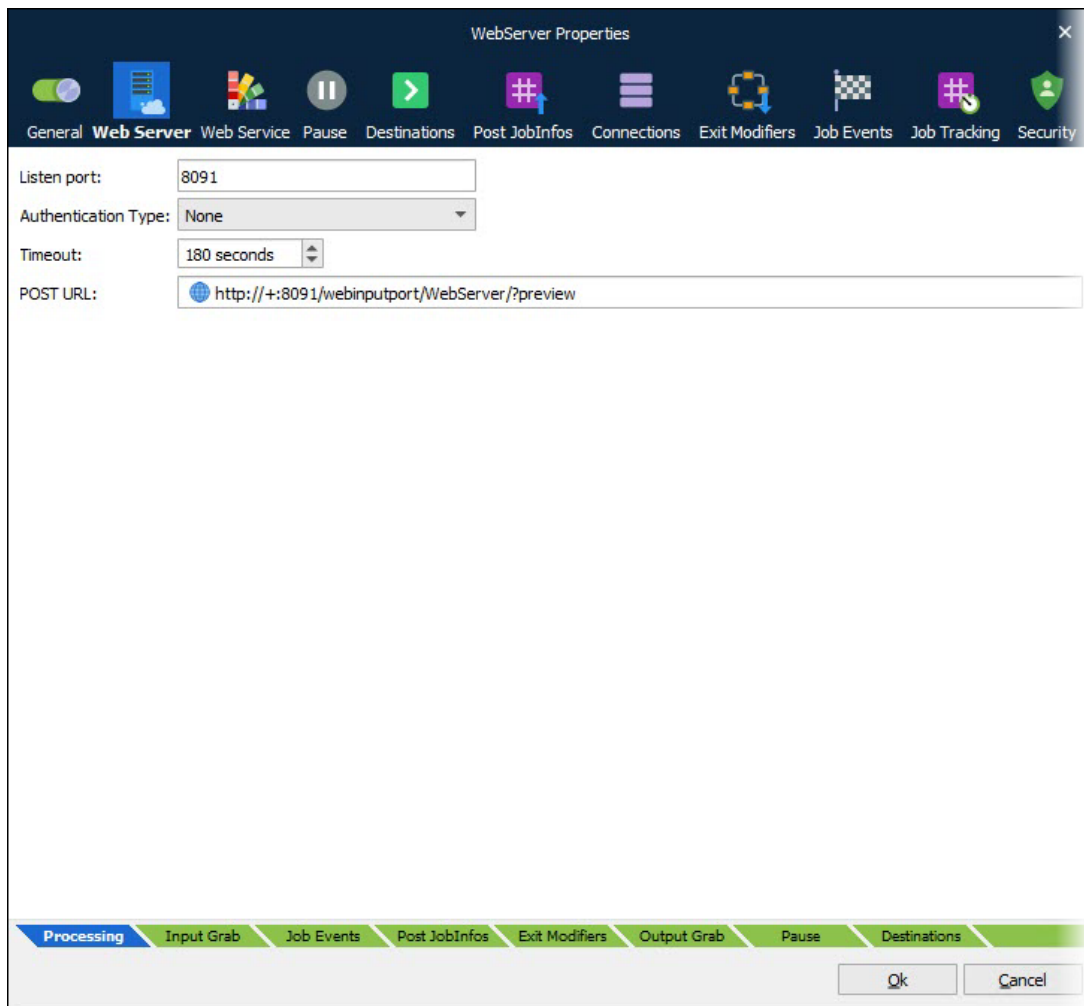
When clicking **Validate settings**, a job is sent to Lasetnet to test the connection. The validation will be successful if the Lasetnet server receives the request and returns a response to Lasetnet Connector within a specified period.

# Solution

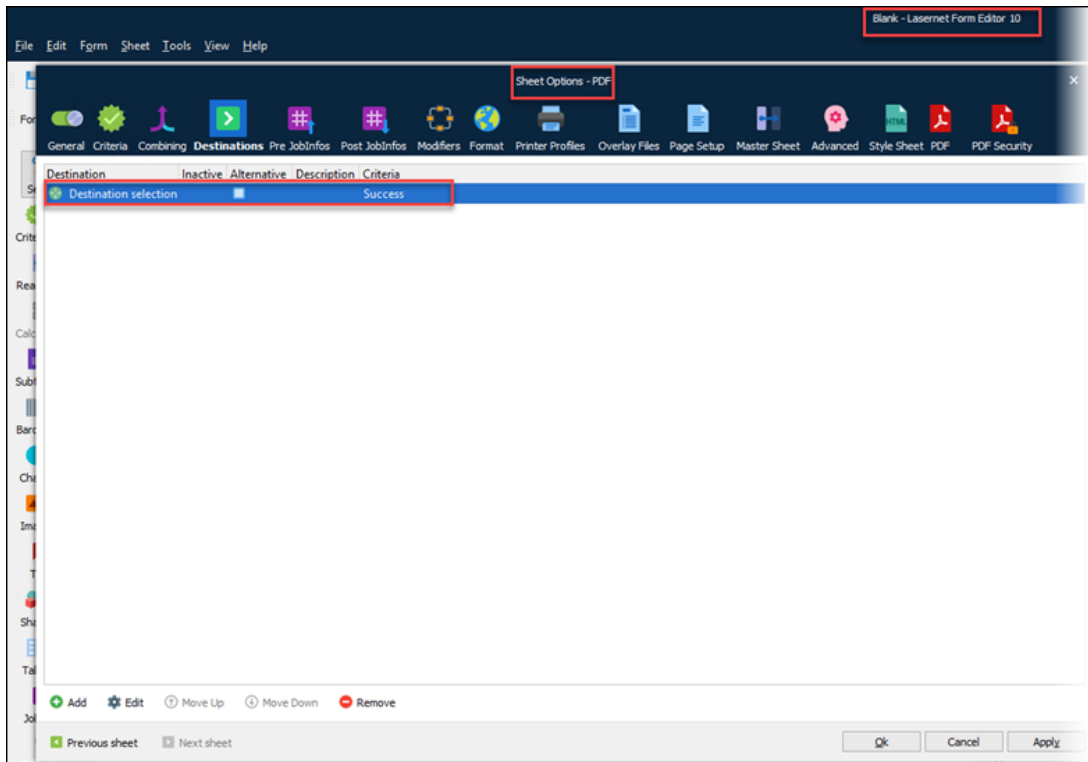
The following are the settings that should be reviewed and configured to have a successful **Web server** connection between Lasernet Connector for AX 2012 and Lasernet 10.

These can be applied to your custom configuration as appropriate.

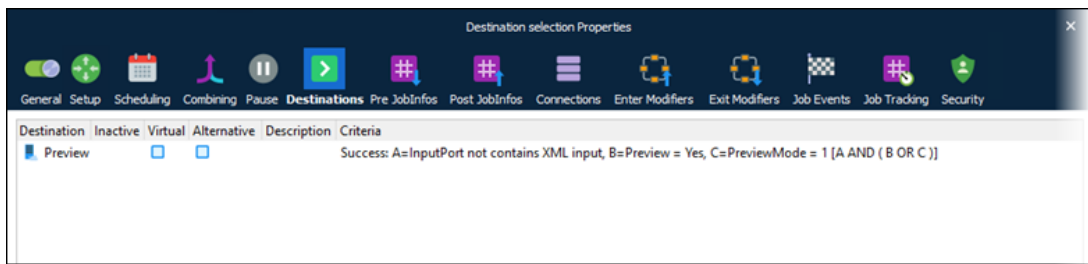
1. You must have a **Web server** input module configured in your Lascript configuration. The **Timeout** field will determine the period of time for the connection validation.
2. The port number used in the Lascript configuration **Web server** input module and the **Web port** field in the **Lascript AX Parameters** must match.



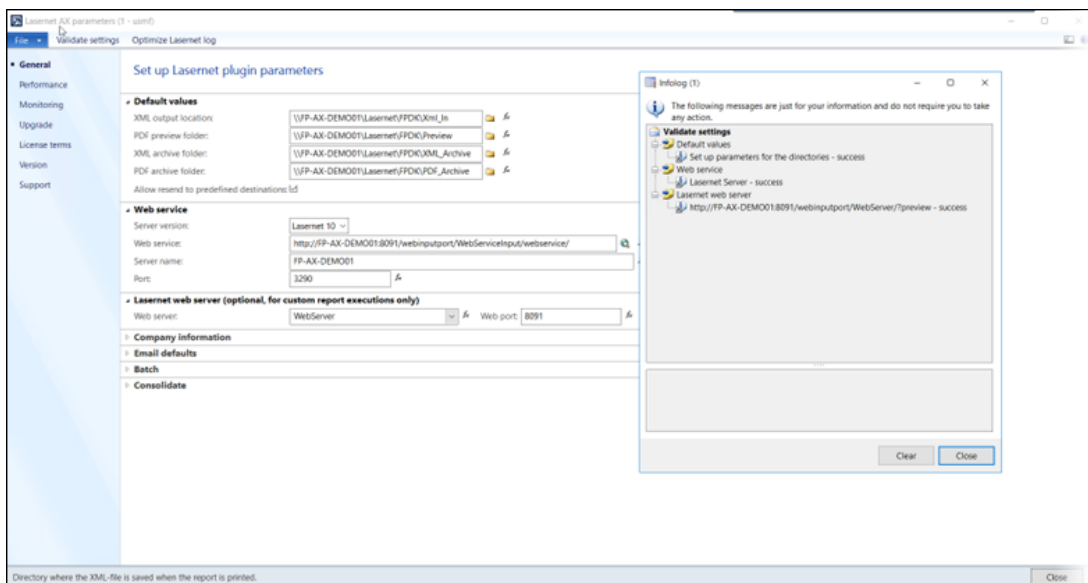
3. Lascript must respond. Therefore, once the job is received through the **Web server** input, it must reach a **Form engine** and match a form with a PDF sheet.



4. The PDF output must be sent to **System > Preview destination**.



5. Once Lasernet Connector for AX 2012 receives Lasernet's response, the **Validate settings** will be successful, and the error will be resolved.



## Additional Information

Attached to this article is a sample Lasernet Configuration for a successful connection between the AX 2012 Lasernet Connector and Lasetnet 10.

For advice on how to implement the solution to your custom configuration, reach out to your Lasetnet partner or contact us via the **Create Ticket** button on our Support Portal.

### Attachments

- [AX2012\\_LN10\\_WebServer\\_WebService\\_SampleSetup.Inconfigx \(554.73 KB\)](#)