



Knowledgebase > AX 2012 > AX 2012 FAQs > Error Message: "The value in field Query is invalid."

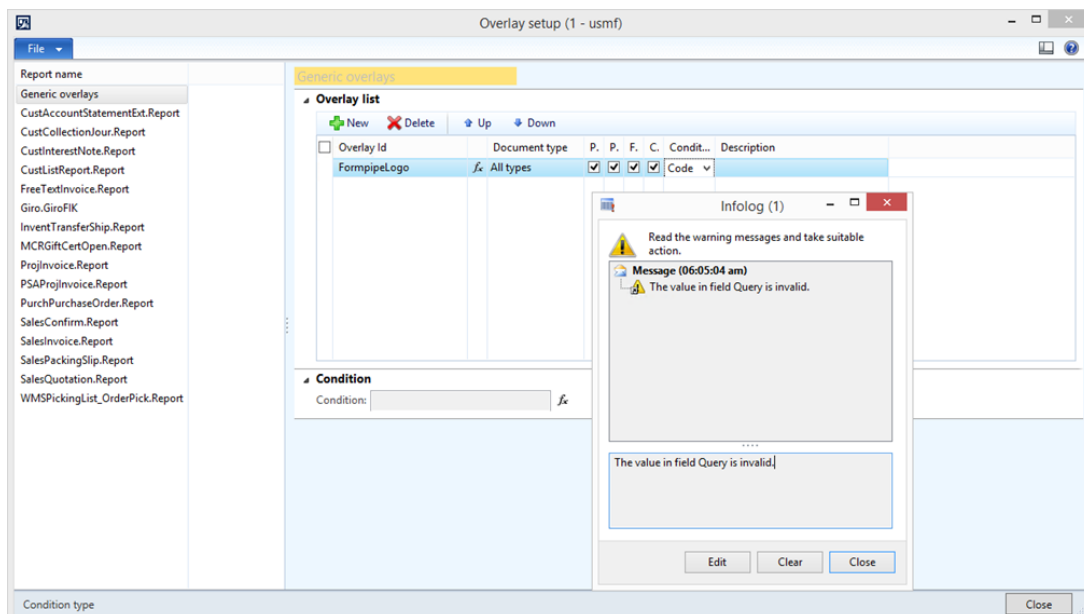
Error Message: "The value in field Query is invalid."

- 2022-10-13 - Comments (0) - AX 2012 FAQs



When trying to change **Condition** to **Query** on the Generic overlays report, you may encounter the following error message:

"The value in field Query is invalid."



The error occurs because **Query** for **Condition** is only useable on an individual report.

Resolution

Please use either the **None** or **Code** condition.

If using **Code** you will be able to use the Report's tables for setting up an **Expression**.