

Step 3: Export Configuration Data

- 2024-05-08 - Comments (0) - Migration

Lasernet for Dynamics 365

To be able to migrate the configuration from one environment to another, we are required to download the migration tool provided by Microsoft.

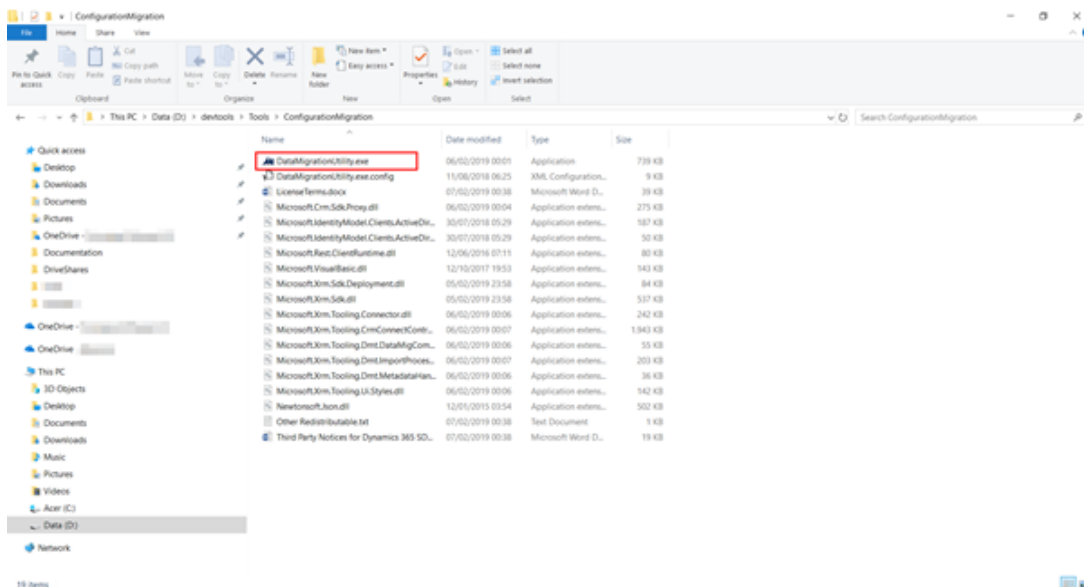
Prerequisites

To be able to execute the steps required in this article the following is required:

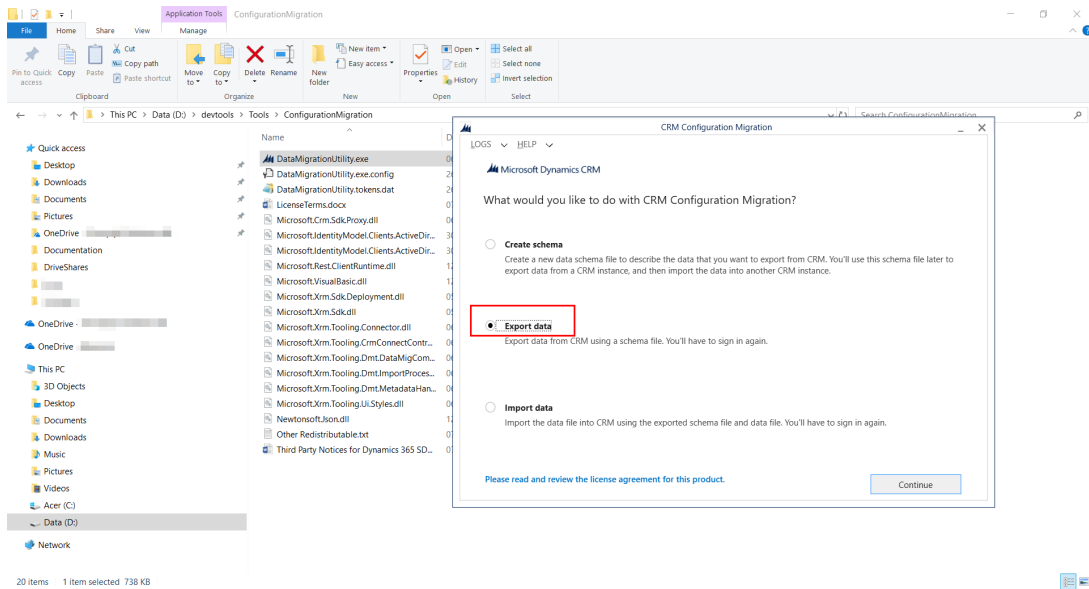
- Migration tool for importing and exporting data from and to environments.
- Previously made export schema.

Steps

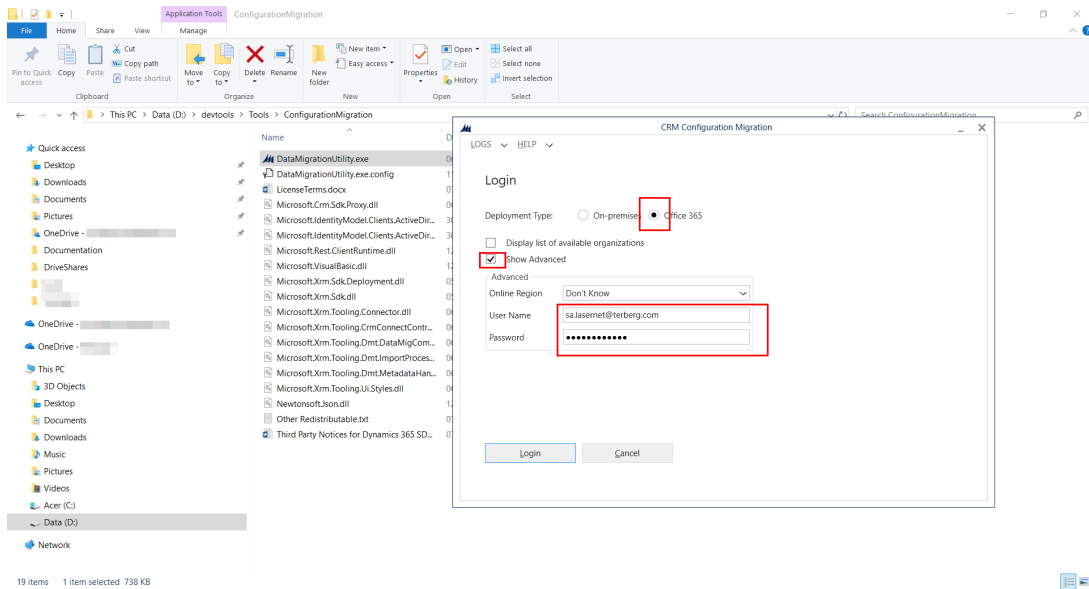
1. Navigate to the folder where you previously stored the [Data Migration Tool](#) and open the executable.



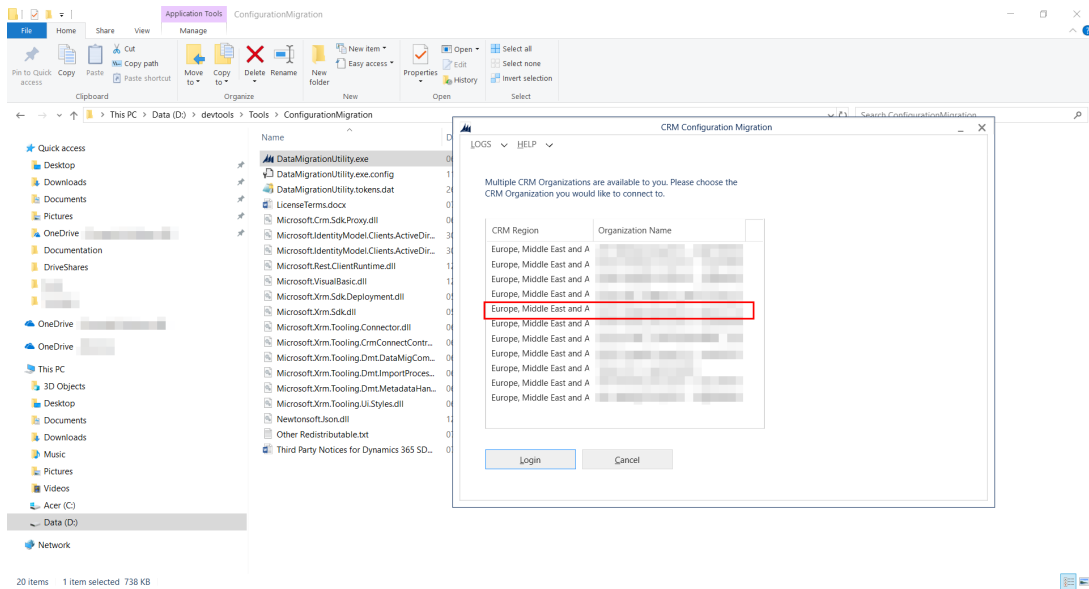
2. Select **Export data** and press **Continue**.



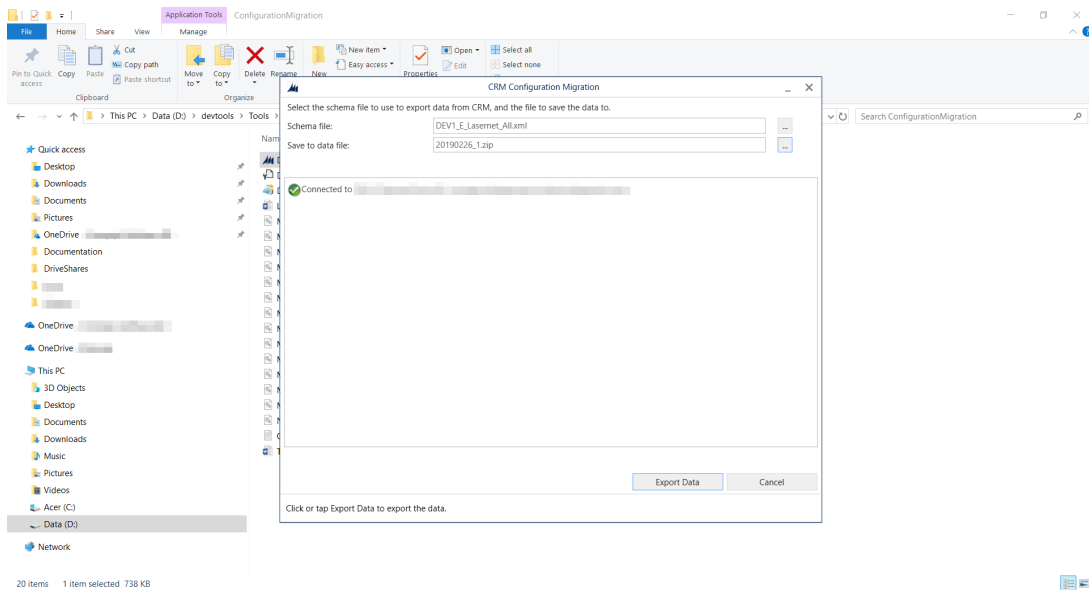
3. Select **Office 365**, **Display list of available organizations**, **Show Advanced**, and provide the required login information. Afterwards, select **Login**.



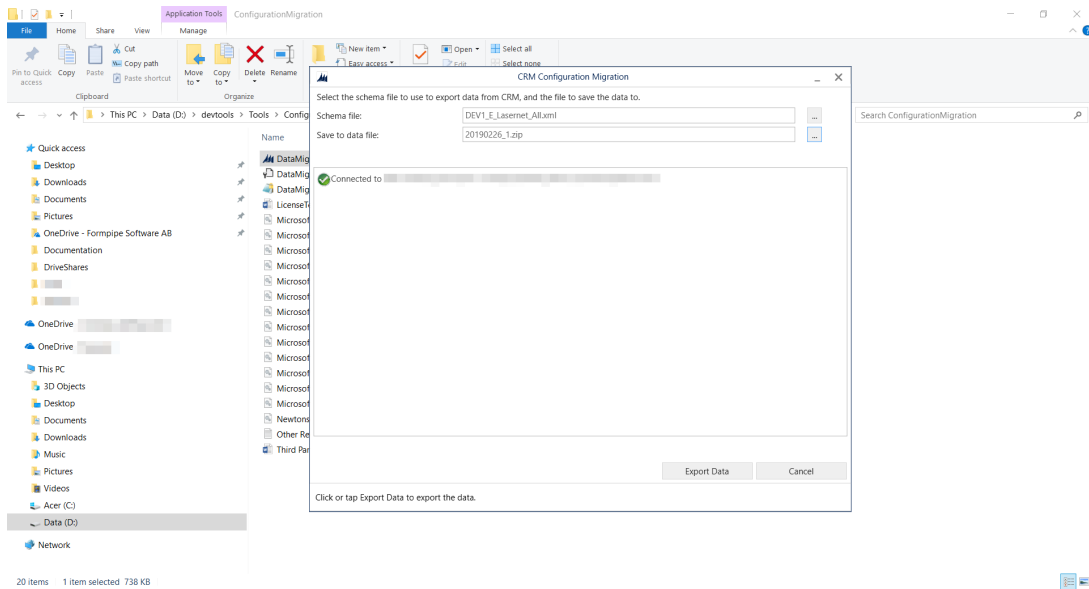
4. Select the organization where the Lasernet connector is installed and press **Login**.



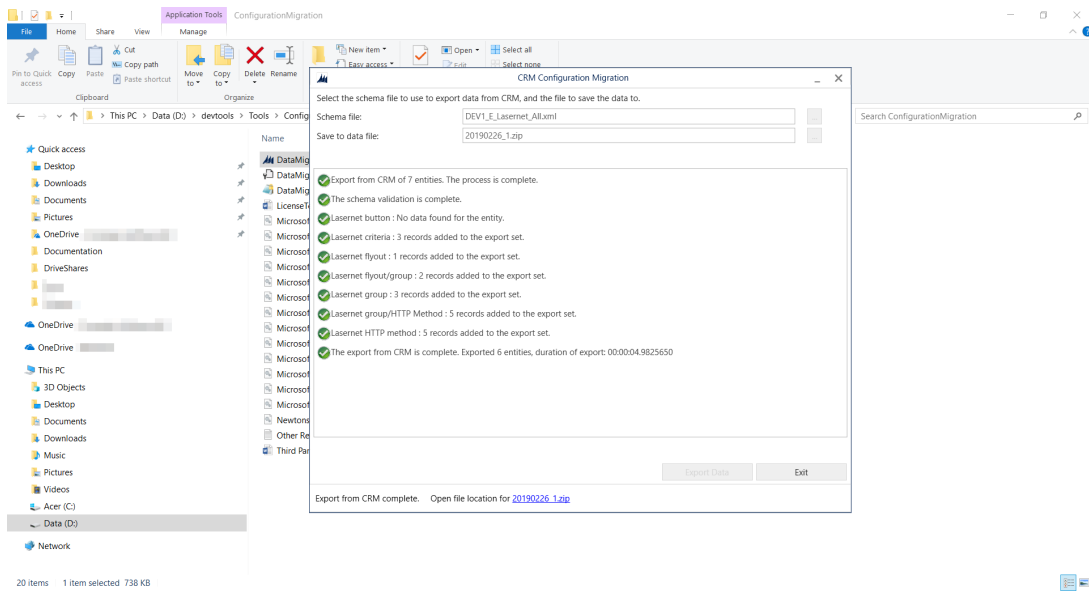
5. Provide the [schema file](#) previously made and provide a name for the data file . Click the **ellipses** button and give the name.



6. Select **Export data**.



7. Select **Exit**.



Related Content

- [Step 1: Acquire the Migration Tool](#)
- [Step 2: Create a Migration Schema](#)