

## How do Locks work in Lasetnet v9?

Mikael Wängelin - 2023-11-16 - Comments (0) - Lasetnet FAQs

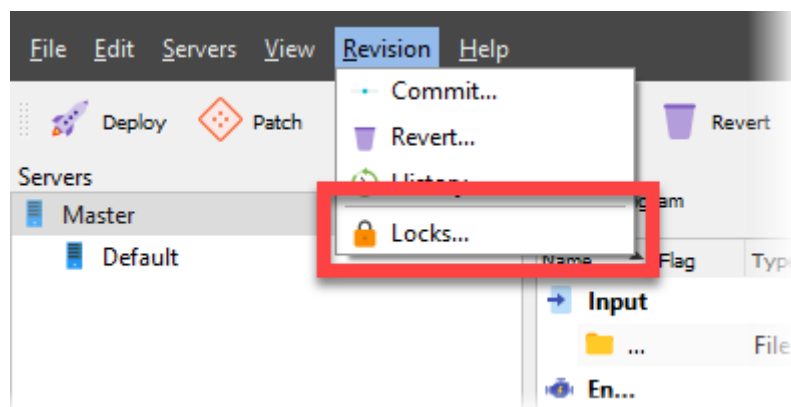
# Lasetnet

Multiple users can work with the same configuration from different computers simultaneously. A built-in lock system handles locked and non-committed objects from being edited at the same time.

It is recommended that you create unique users on the Lasetnet Configuration Server for each user working with the Lasetnet Developer, in order to track changes and commits as well as handling object locks in the configuration.

When an object is added, opened or modified, a lock symbol will appear next to it with information about who has locked it and when. The object is locked for any user until it is either committed or reverted.

To identify locks within a build, open Lasetnet Developer, click **Revision** in the Menu bar and then select the **Locks** option.

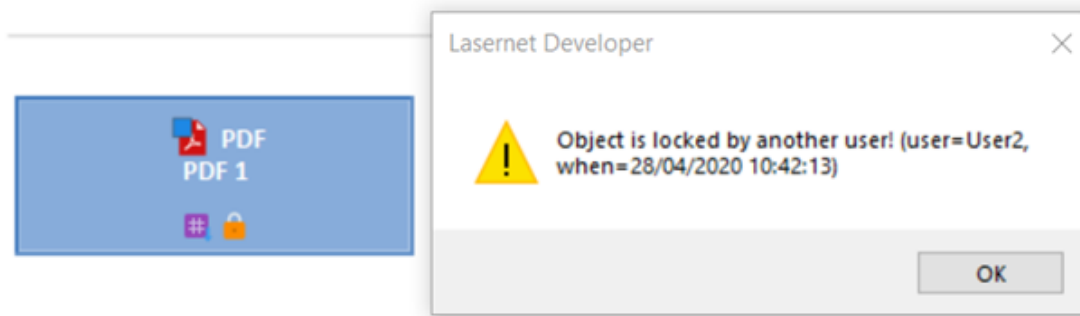


Only a user of the admin group is able to remove listed locks for another user. This is because removing locks will remove the user's work.

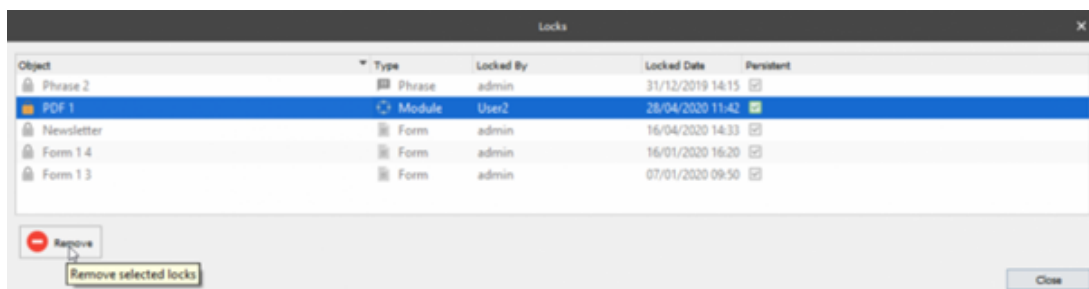
Below are two scenarios where the Locks feature would come into use:

### Scenario one

The admin user logs into Lasernet Developer and tries to open the PDF module. An alert appears explaining that the PDF module is locked by user User2.



User2 can log in and commit or revert the amend to the PDF module so it will become unlocked. Alternatively, the admin user can remove the lock by opening **Revision > Locks** and clicking **Remove**.



Removing the lock means all the modified settings of a non-committed object are immediately lost for that logged-in user (or when the configuration opens for that user). In this example, User2 would lose their work on the PDF module.

### Scenario two

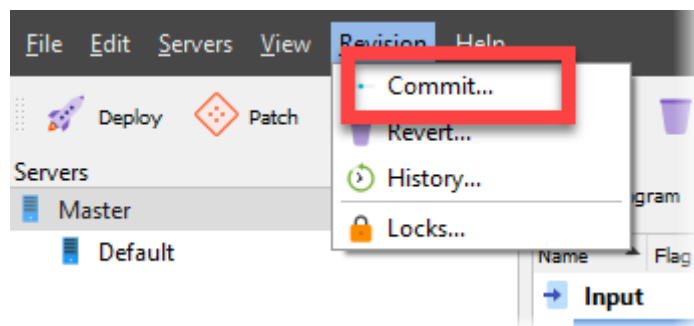
In the example below, the admin user is logged in and has made amends to several objects. The admin user wishes to remove the locks. They appear greyed out as they belong to the admin user. These greyed-out locks can only be removed by the admin user by committing or reverting the changes. They cannot be removed by using the lock screen as users cannot remove their own locks.

Object	Type	Locked By	Locked Date	Persistent
Phrase 2	Phrase	admin	31/12/2019 14:15	<input checked="" type="checkbox"/>
Newsletter	Form	admin	16/04/2020 14:33	<input checked="" type="checkbox"/>
Form 14	Form	admin	16/01/2020 16:20	<input checked="" type="checkbox"/>
Form 13	Form	admin	07/01/2020 09:50	<input checked="" type="checkbox"/>

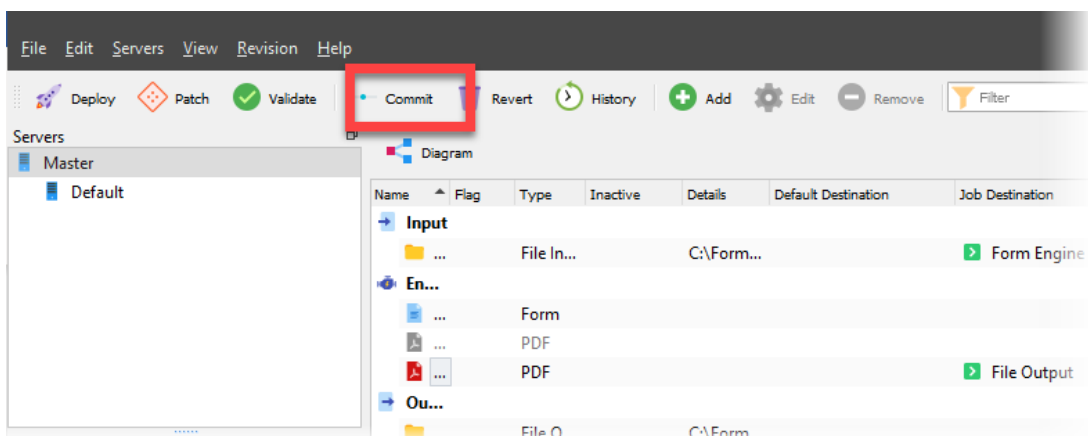
Remove

### Committing changes

To push any new changes (additions, edits, deletions) to the configuration server since the last revision, click **Commit**. These changes will be pushed to logged-in users (or the next time the configuration opens for that user).



or here:



### **Reverting changes**

Click **Revert** to revert changes for the selected objects since the last commit. These changes will be pushed to logged-in users (or the next time the configuration opens for that user).