

## How to test a module in the Lاسernet platform.

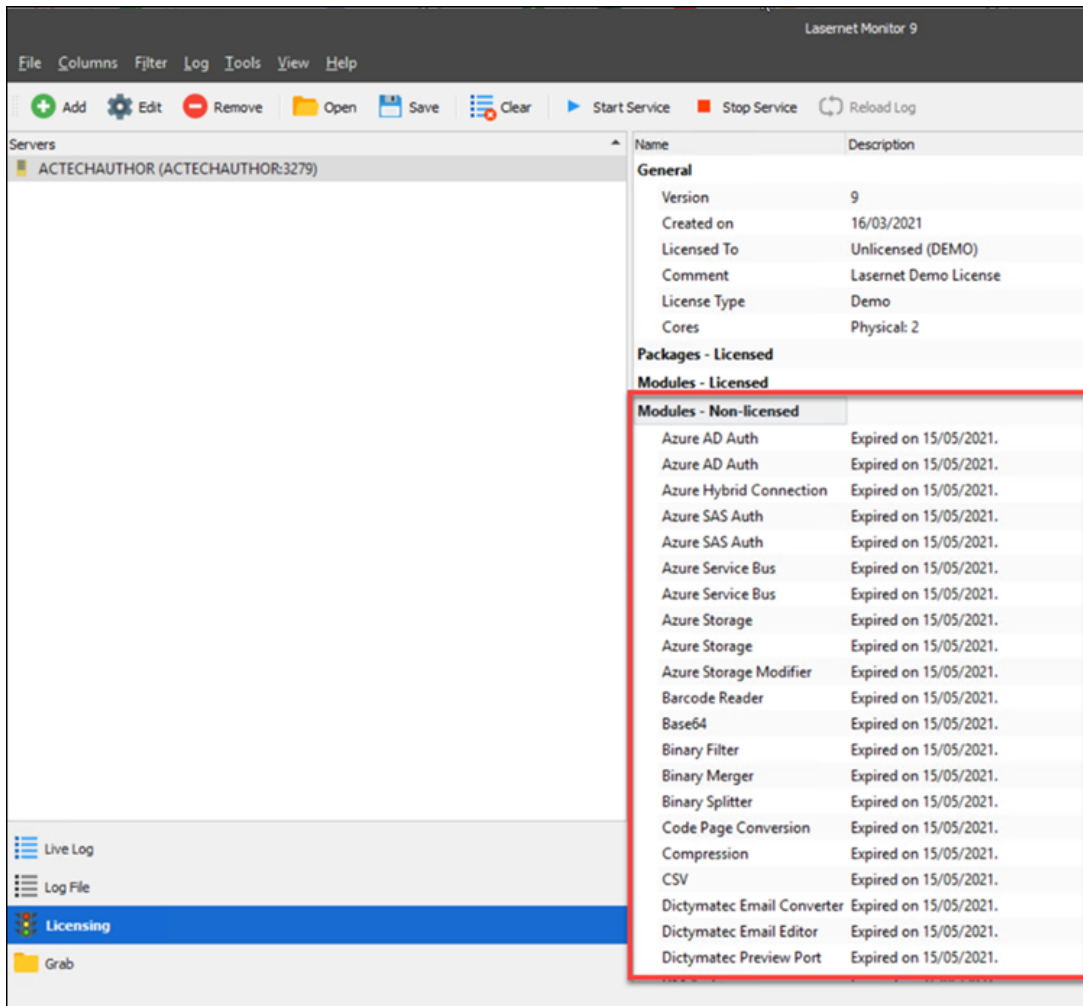
- 2021-08-25 - Comments (0) - Lاسernet Developer FAQs

# Lاسernet

The Lاسernet platform contains extra modules and functionalities that require additional licensing.

To view modules that are currently licensed, follow these steps:

1. Open Lاسernet Monitor.
2. Navigate to **Licensing > Modules - Licensed** and **Modules - Non-licensed**.



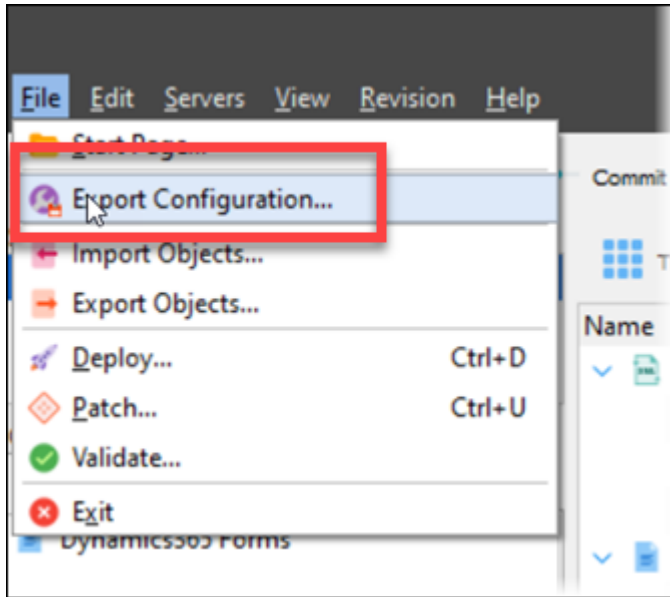
The screenshot shows the Lاسernet Monitor 9 interface. The 'Licensing' section is active, and the 'Modules - Non-licensed' tab is selected. The following table lists the modules and their expiration dates:

Module Name	Expiration Date
Azure AD Auth	Expired on 15/05/2021.
Azure AD Auth	Expired on 15/05/2021.
Azure Hybrid Connection	Expired on 15/05/2021.
Azure SAS Auth	Expired on 15/05/2021.
Azure SAS Auth	Expired on 15/05/2021.
Azure Service Bus	Expired on 15/05/2021.
Azure Service Bus	Expired on 15/05/2021.
Azure Storage	Expired on 15/05/2021.
Azure Storage	Expired on 15/05/2021.
Azure Storage Modifier	Expired on 15/05/2021.
Barcode Reader	Expired on 15/05/2021.
Base64	Expired on 15/05/2021.
Binary Filter	Expired on 15/05/2021.
Binary Merger	Expired on 15/05/2021.
Binary Splitter	Expired on 15/05/2021.
Code Page Conversion	Expired on 15/05/2021.
Compression	Expired on 15/05/2021.
CSV	Expired on 15/05/2021.
Dictymatec Email Converter	Expired on 15/05/2021.
Dictymatec Email Editor	Expired on 15/05/2021.
Dictymatec Preview Port	Expired on 15/05/2021.

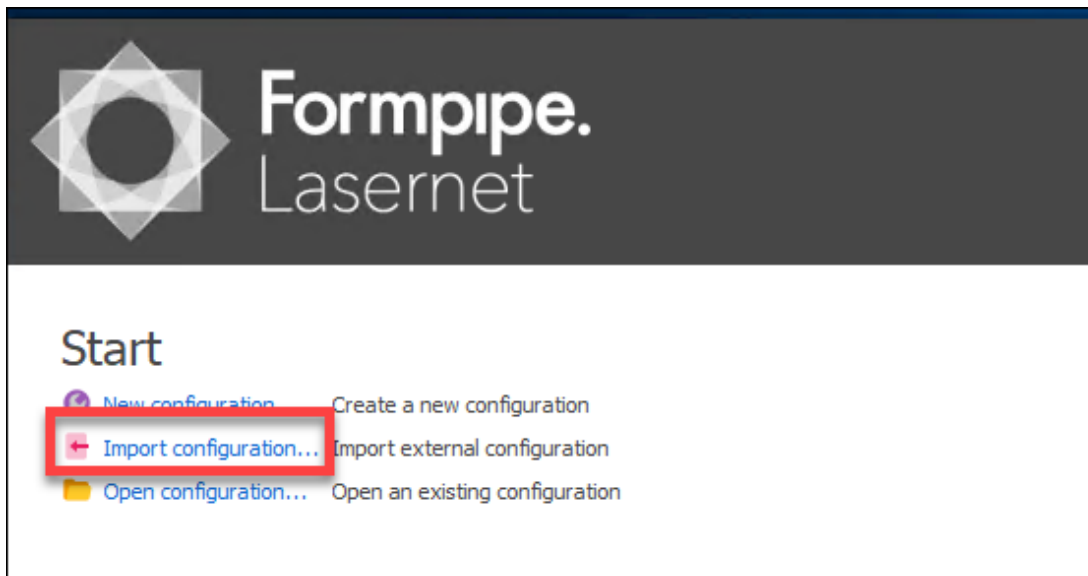
## Demo License

Our demo license for the Lasernet Platform holds licenses for all modules. It is useful to download the demo license for demo purposes. Please follow these steps to do so:

1. Download the demo license for Lasernet found at <https://kb.lasernet.formpipe.com/category/50/0/10/>
2. On the customer's test Lasernet server - take a copy of the configuration.
3. In Lasernet Developer, click **File** in the Menu bar and select **Export Configuration....**

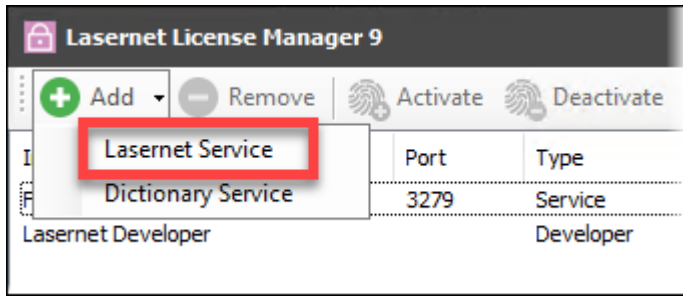


4. Give the export a name and then create a new demo configuration using the copy you have just taken.
5. On the Lasernet Developer *Start* page, select **Import configuration....**

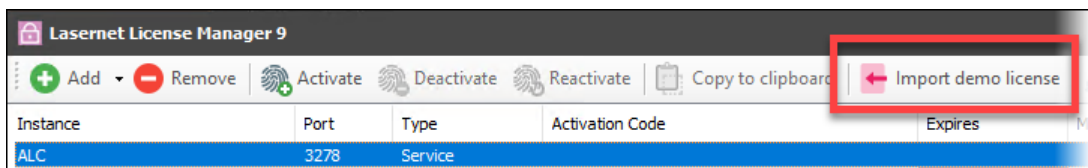


6. Choose the demo configuration and add the demo license for the demo configuration.

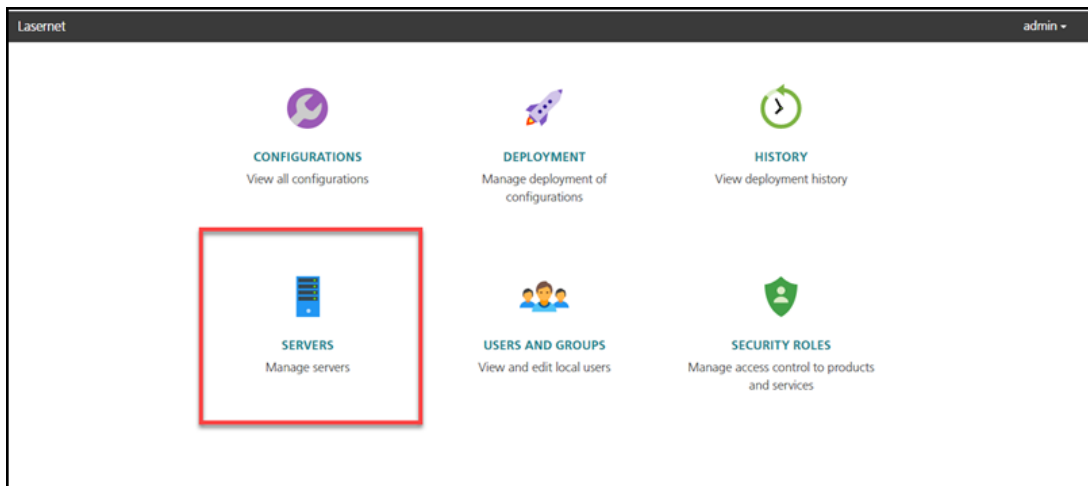
7. In *License Manager*, click the **Add** button and select **Lasernet Service**.



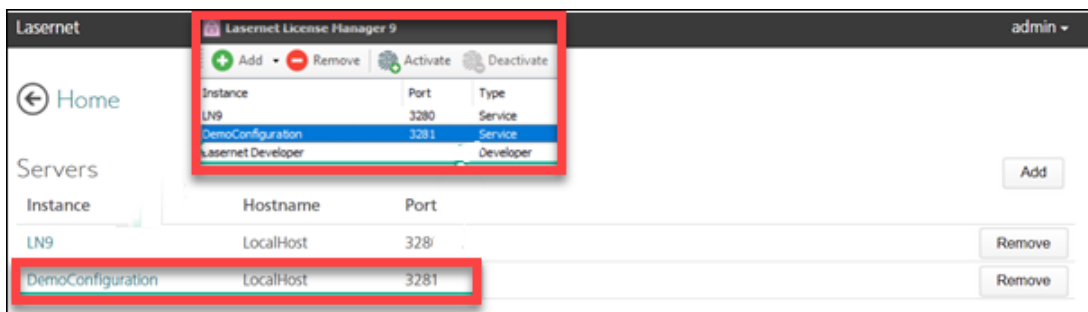
8. Give the service a name and then import the demo license using the **Import demo license** tab.



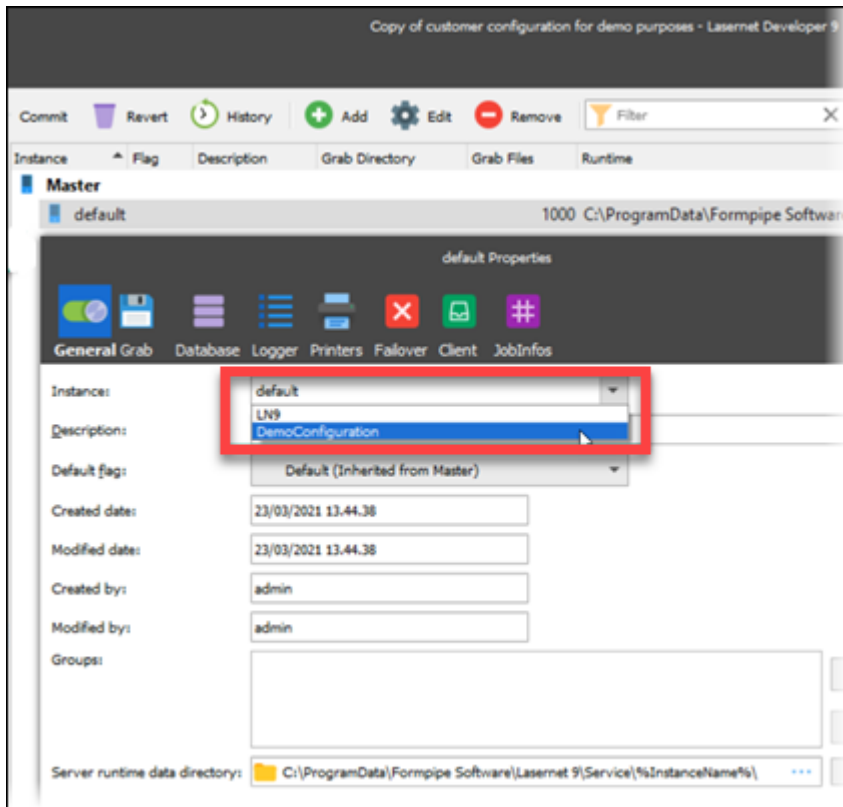
9. Attach your configuration to the license, open the Lasernet Portal and select **Servers**.



10. Click **Add** to add the server and give it the same name and port number as entered in License Manager.



11. Open Lasernet Developer, select **Servers**, click **Add** and choose the demo configuration in the Instance dropdown menu.



12. Click **Deploy**.

You now have the customer's configuration running on the demo license, with access to all the licensed modules. Your test demo work can begin.

We recommend this solution instead of adding the demo license to the customer's test configuration as that could risk being unable to change the license code back when it expires.