

Lاسernet 10 Meta Input Port Retains Lاسernet 9 Settings

Adam McStravick - 2022-10-13 - Comments (0) - Lاسernet General Information

Lاسernet

This article applies to users upgrading from Lاسernet 9 (or earlier) to Lاسernet 10, both on the same server and with Meta Ports.

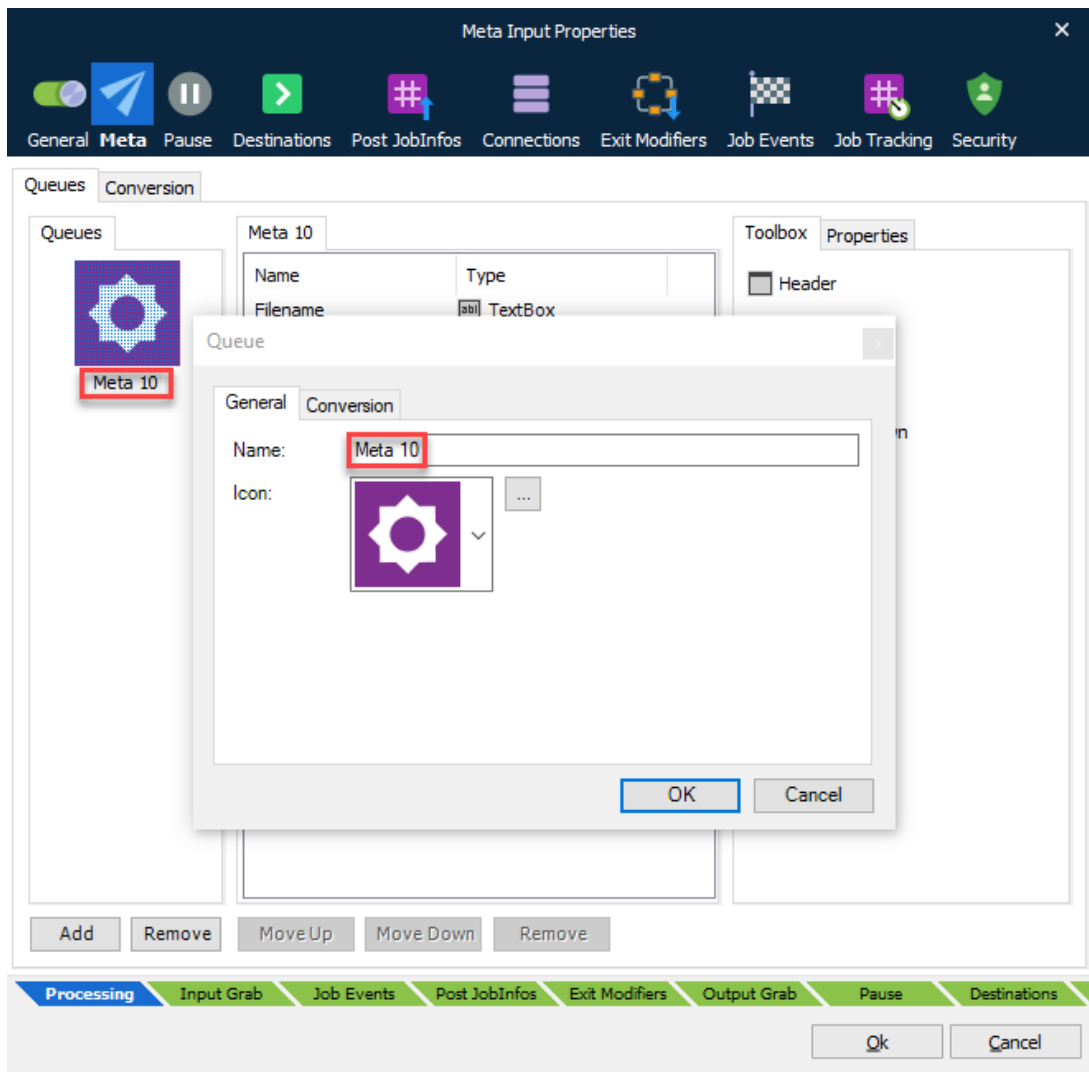
Lاسernet 10 has increased security, with some Lاسernet Printer Port settings effected. Therefore, manual steps are necessary to ensure 100% compatibility.

We recommend that you follow the steps in this article to ensure Lاسernet Meta input port settings are applied and function as expected.

Additional steps

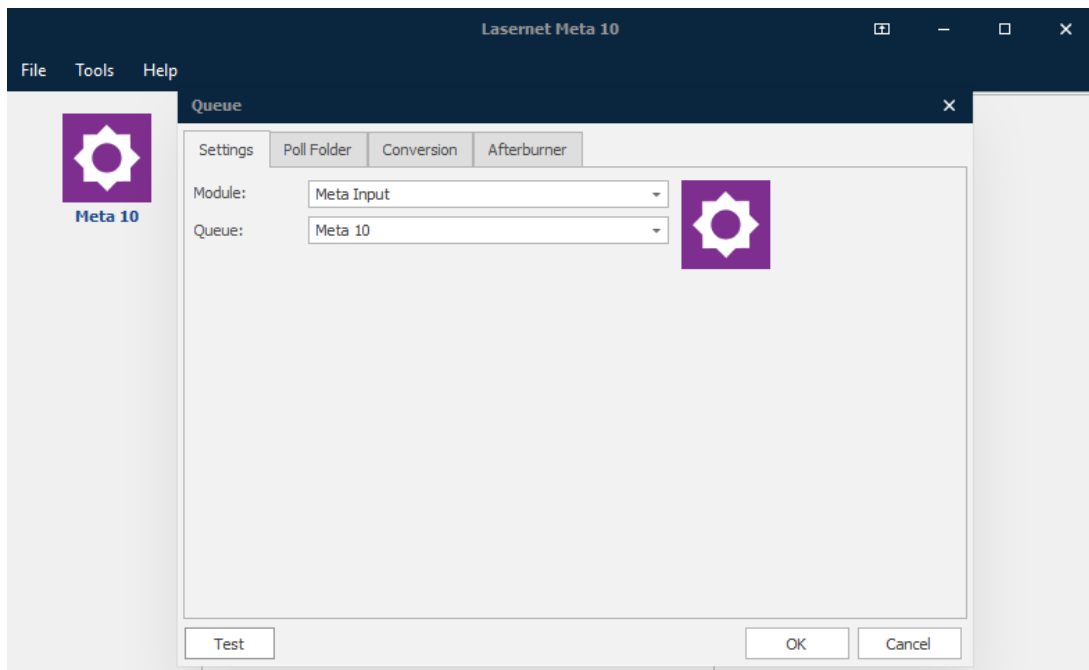
Lاسernet Developer

1. Export Configuration from Lاسernet 9.
2. Stop Lاسernet 9 Service.
3. Stop Lاسernet Meta Proxy 9 Service.
4. Start Lاسernet 10 Service.
5. Start Lاسernet Meta Proxy 10 Service.
6. Import Configuration to Lاسernet 10.
7. Type 10 as a suffix for any Printer Input module in Lاسernet 10. For example, change LاسernetInput to LاسernetInput10.
8. Deploy Configuration



Lasernet Meta

- Start Lasernet Meta 10 and right-click in the queue list to add a new meta queue. It creates a new Windows printer queue and printer port with a new Port URL that matches that of the Lasernet Meta 10 application



Windows Printers and scanners

- Start the Printers and scanners application and delete the old printer meta queues previously attached to Lasernet Meta 9

Tags
Meta
Port
Printer Ports