

XHTML Output (Image, JobInfo, and Hyperlink)

Alex Pearce - 2024-03-18 - Comments (0) - Lasetnet Form Editor 9 - XHTML, CSV, EDI, XML, JSON, PDF Form (filled) Output

Lasetnet

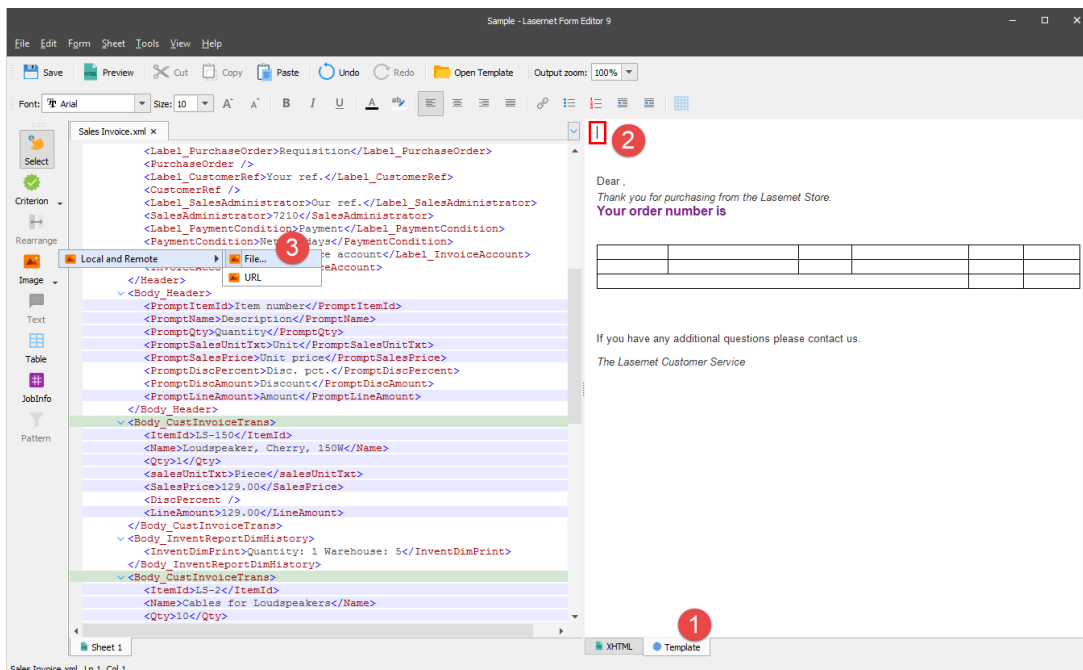
In this exercise, you are proposed to continue designing your HTML output by adding an image, JobInfos and a hyperlink.

Exercise

Download and import the attached configuration called **02. XHTML Output (Image, JobInfo, and Hyperlink)** in Lasetnet Developer 9. Afterwards, go to the **Forms** section and open the **Sample** form.

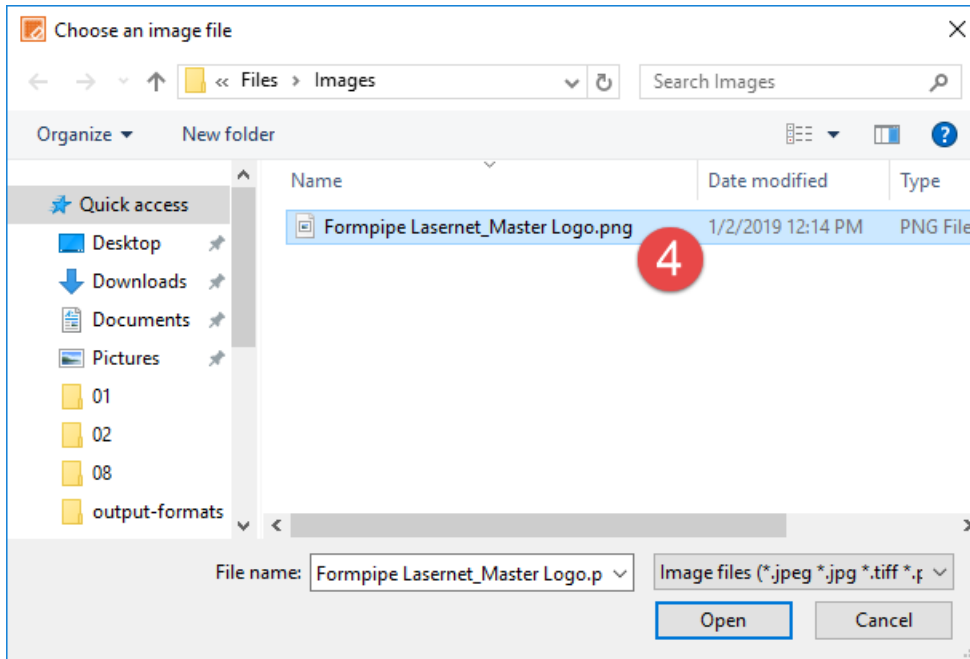
Let's start with adding an image from the external file to the output. To this end, follow the steps listed below.

1. In the output, switch to the **Template** tab.
2. Place the cursor where you want to paste an image.
3. On the Developer toolbar, click **Image**, then click **Local and Remote**, and then click **File....**

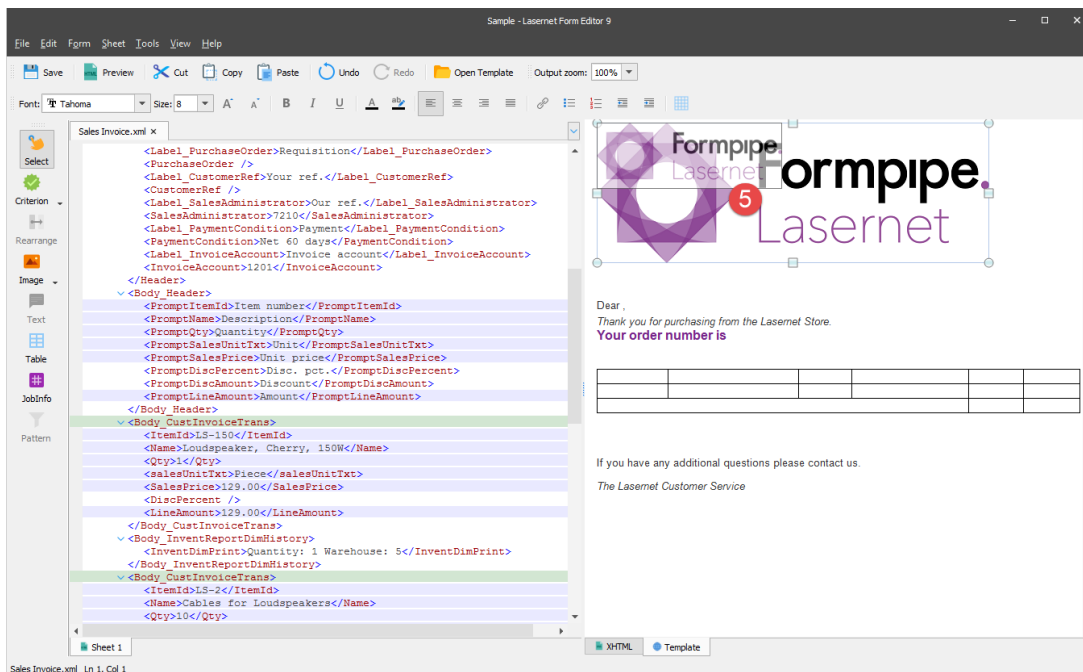


The screenshot shows the Lasetnet Form Editor 9 interface. The main window is titled "Sample - Lasetnet Form Editor 9". The menu bar includes File, Edit, Form, Sheet, Tools, View, and Help. The toolbar contains icons for Save, Preview, Cut, Copy, Paste, Undo, Redo, Open Template, and Output zoom (100%). The font settings are Arial, Size 10. The left sidebar has a "Select" icon and a "Criteria" dropdown. The main area is split into two panes. The left pane shows the XHTML code for a sales invoice, with a red circle '3' highlighting the "File..." option in the "Local and Remote" menu. The right pane shows the rendered XHTML output, with a red circle '2' highlighting the cursor position in the "Your order number is" text. A red circle '1' is on the "Template" tab button at the bottom. The rendered output includes a "Dear" message, a "Thank you for purchasing from the Lasetnet Store. Your order number is" followed by a table with 5 empty cells, and "If you have any additional questions please contact us. The Lasetnet Customer Service".

4. In the **Choose an image file** dialog displayed, select a file, and then click **Open**.



5. Once the image is inserted, drag one of the control points on the sides or corners of the selection box to resize it.



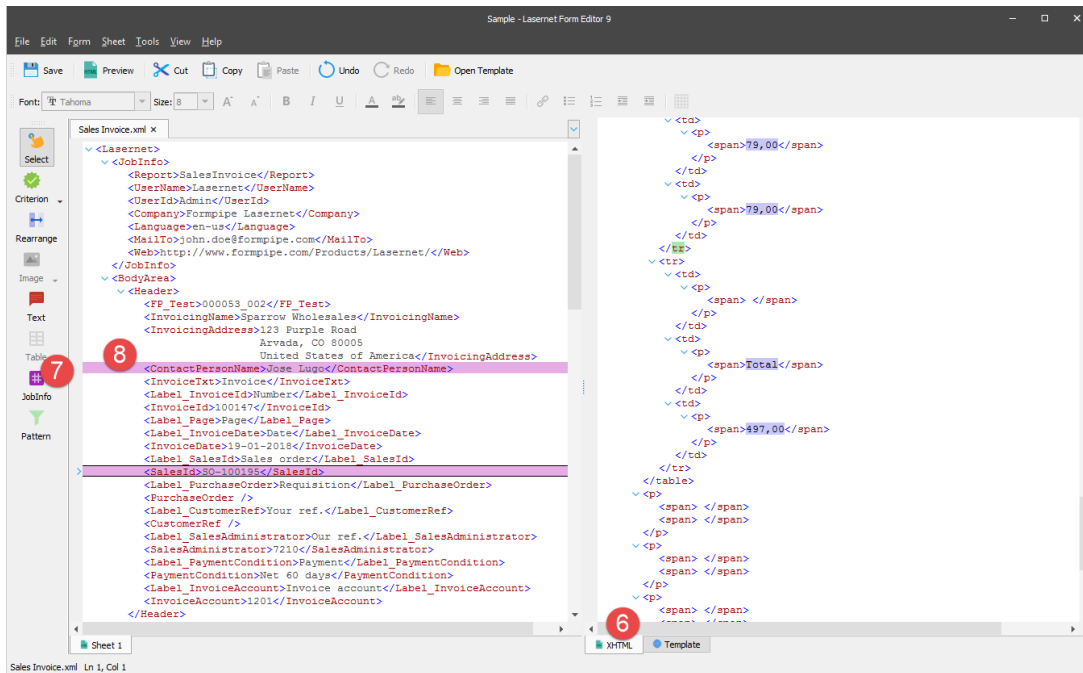
Continue designing your HTML output by adding JobInfos. To this end, follow the steps listed below.

6. Switch to the **XHTML** tab to make adding JobInfos to the input possible.

7. On the Developer toolbar, click **JobInfo**.

8. When a pointer becomes a cross, click the **<ContactPersonName>** element.

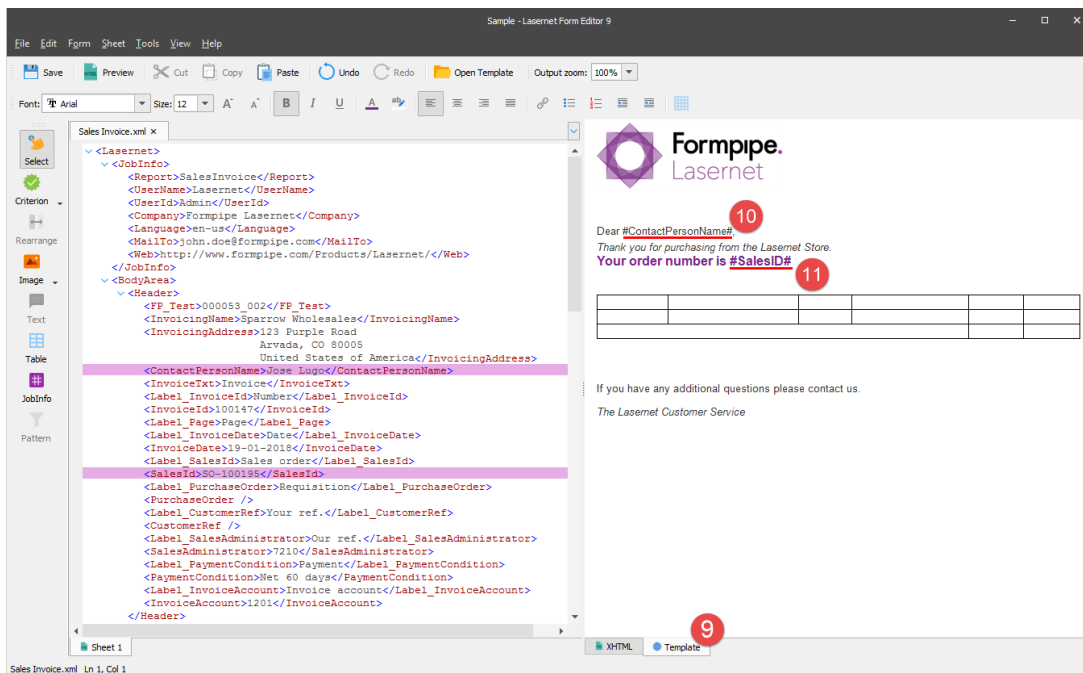
Once you are done, repeat steps 7-8 to JobInfo to the **<SalesID>** element.



9. In the output, switch to the **Template** tab.

10. Place the cursor in the first line before a comma and type the following text:
#ContactPersonName#.

11. Place the cursor at the end of the third line and type the following text: **#SalesID#**.

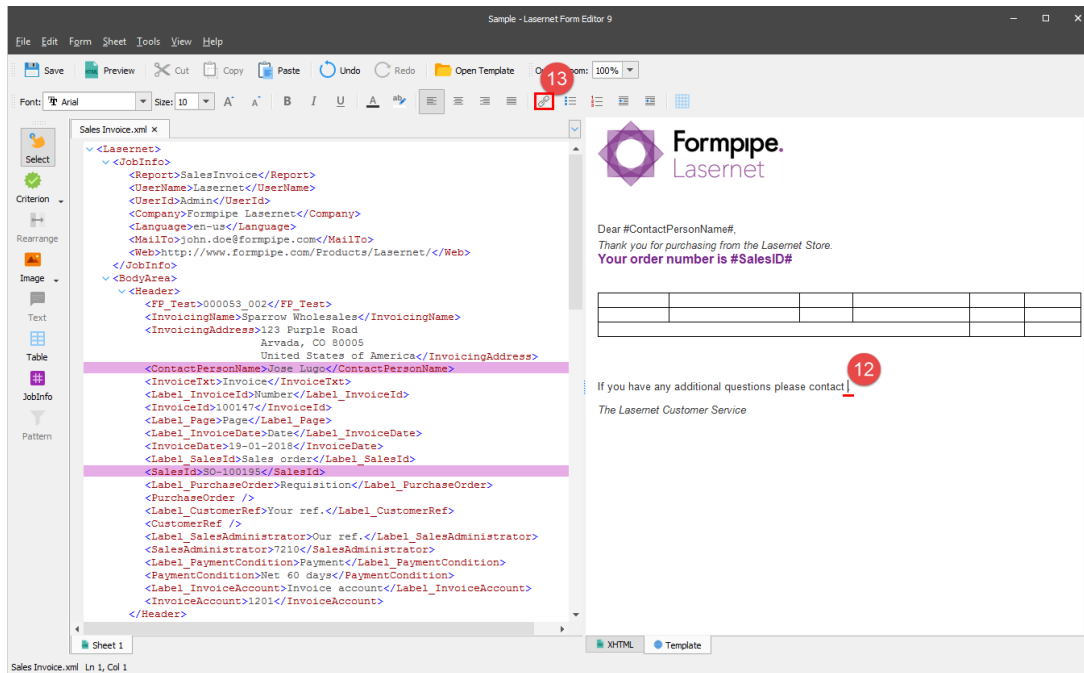


When a JobInfo is added to the XML input, it takes automatically a name which is equal to a name of the node to which it is added. To correctly execute the JobInfo in the output, the JobInfo name enclosed in the hash signs (#) shall be indicated. While generating the document, a JobInfo name is substituted with the node value, so you can see the value in the final document.

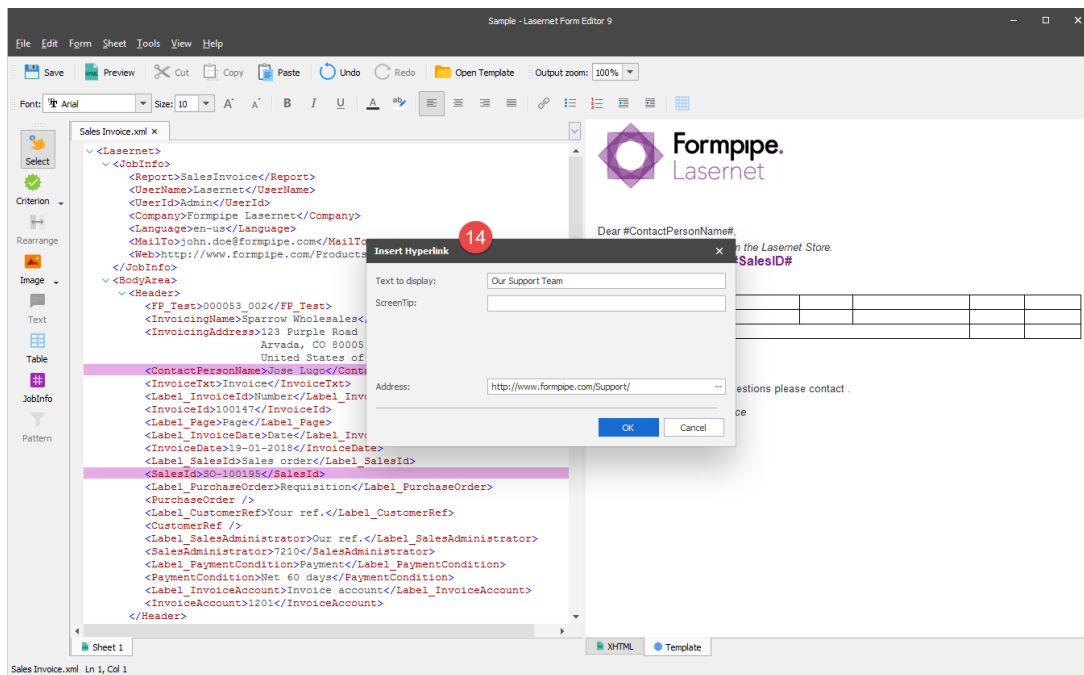
You are now proposed to add a hyperlink. To this end, follow the steps listed below.

12. In the fourth line, delete the **us** text and place the cursor instead.

13. On the toolbar, click the button which allows you to create a link to a web page.



14. In the **Insert Hyperlink** dialog displayed, type **Our Support Team** in the **Text to display** text box and **http://www.formpipe.com/Support/** in the **Address** text box. Once you are done, click **OK**.



15. On toolbar, click the **Preview** button to view the final result in a browser window.

The screenshot displays the Formpipe Labeled Form Editor software. The main window is split into two panes. The top pane shows a preview of an invoice for 'Formpipe Lasernet'. The invoice includes a header with the company logo, a salutation 'Dear Jose Lugo', a thank you message, and the order number 'SO-100195'. Below this is a table of items:

Item number	Description	Quantity	Unit	Unit price	Amount
LS-150	Loudspeaker, Cherry, 150W	1	Piece	129.00	129.00
LS-2	Cables for Loudspeakers	10	Box	21.00	210.00
LS-75	Loudspeaker, Cherry, 75W	1	Piece	79.00	79.00
LS-81	Loudspeaker, Walnut, 80W	1	Piece	79.00	79.00
				Total	497.00

The bottom pane shows the XML code for the invoice, including fields for payment conditions, invoice account, and labels. The status bar at the bottom indicates 'Sales Invoice.xml Ln 1, Col 1'.

Attachments

- [02.-XHTML-Output-Image-JobInfo-and-Hyperlink.Inconfig \(215.75 KB\)](#)