

XLS

Alex Pearce - 2024-03-18 - Comments (0) - Lasetnet Form Editor 9 - XLS, CSV and TXT Input

Lasetnet

Input files of the XLS format are automatically converted to XML. Handling and processing the XLS input format files in the Lasetnet Form Editor application is similar to the operations with the XML input format files.

When an .xlsx grab file opens, it is automatically converted to XML.

Spreadsheets created in Microsoft Excel 2007 or newer are supported. Installing Microsoft Excel is not required for converting Excel into XML.

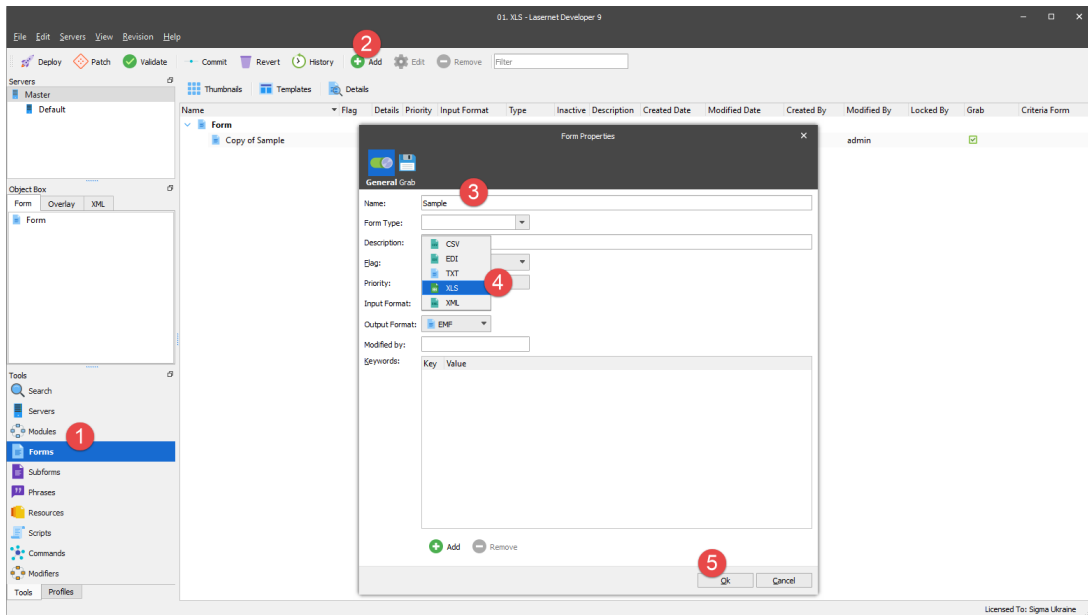
Exercise

Download and import the attached configuration called **01. XLS** in Lasetnet Developer 9. Afterwards, follow the steps listed below.

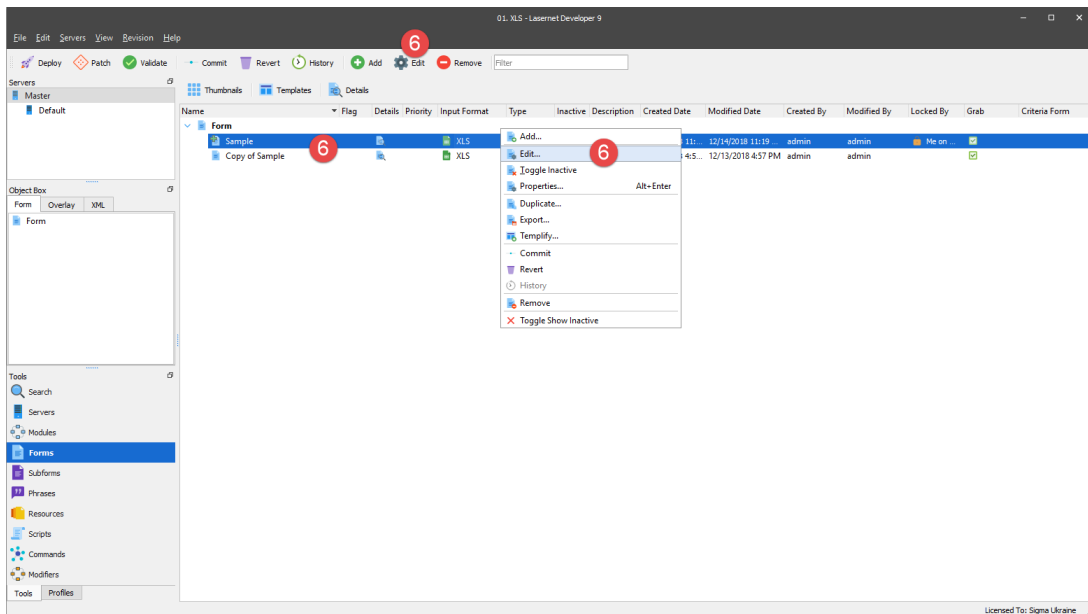
1. On the **Tools** panel, click **Forms** to open a form area.
2. Click the **Add** button on the top toolbar.

Otherwise, you can drag the **Form** item to the form area. As one more alternative, you can right-click in the form area, and then click **Add** in the context menu that appears.

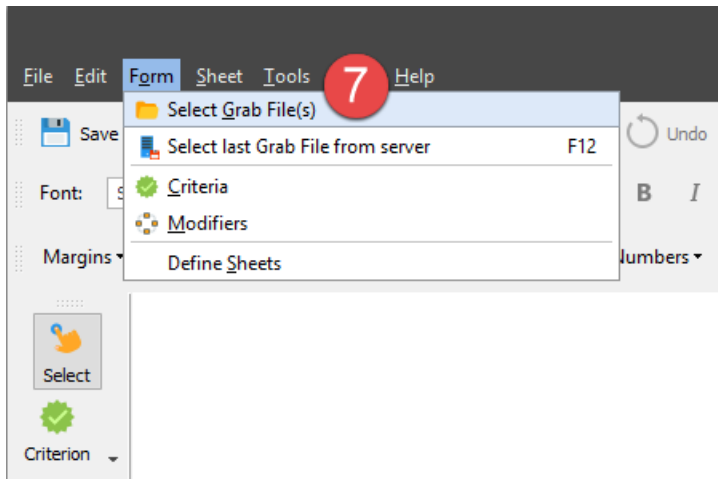
3. Enter a name of the new form (Sample) in the **Name** field.
4. Select **XLS** as an input format.
5. Once you are done, click **Ok** to confirm adding a new form.



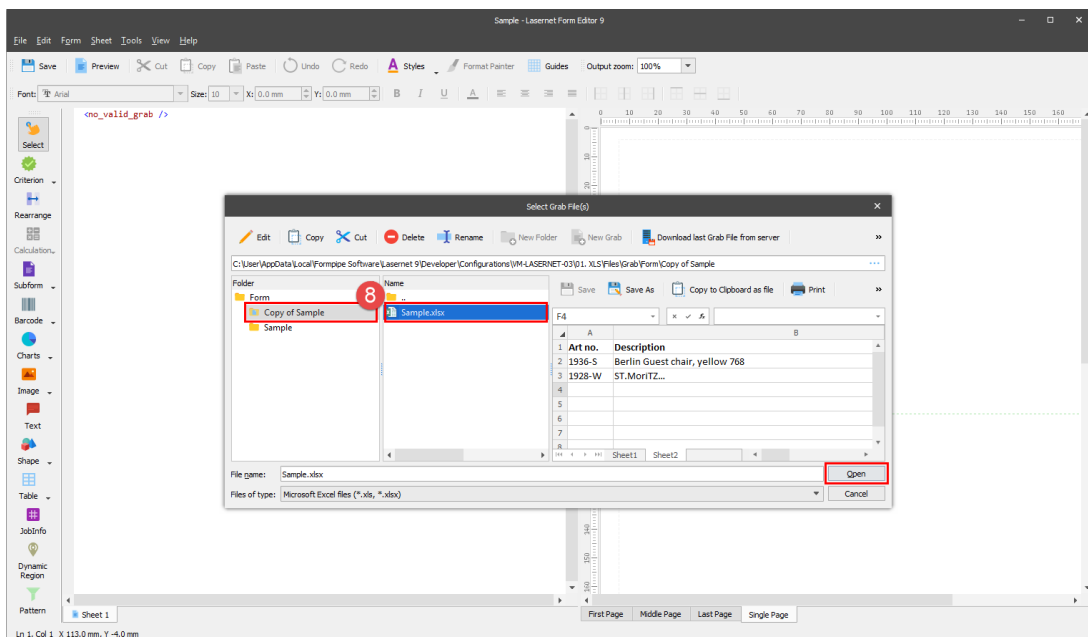
6. Open the **Sample** form you have just added for editing. To this end, select it, and then click the **Edit** button on the toolbar. Otherwise, you can right-click the form, and then select **Edit** on the context menu that appears, or just double-click the form.



7. Open a grab file named **Sample**. To this end, on the **Form** menu, click **Select Grab File(s)**.

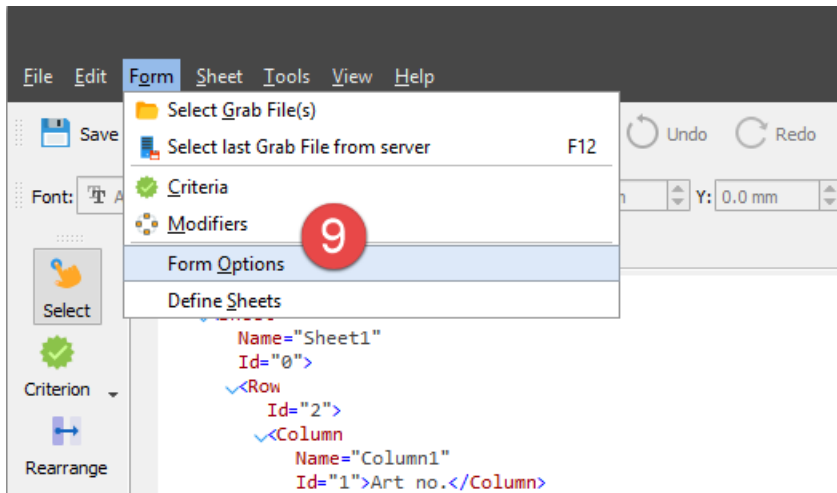


8. In the **Select Grab File(s)** dialog that opens, select the **Copy of Sample** folder, then select the **Sample** file, and then click **Open**.



You are now proposed to modify a structure of the input file to improve your effectiveness and efficiency for working with XML. To this end, follow the steps listed below:

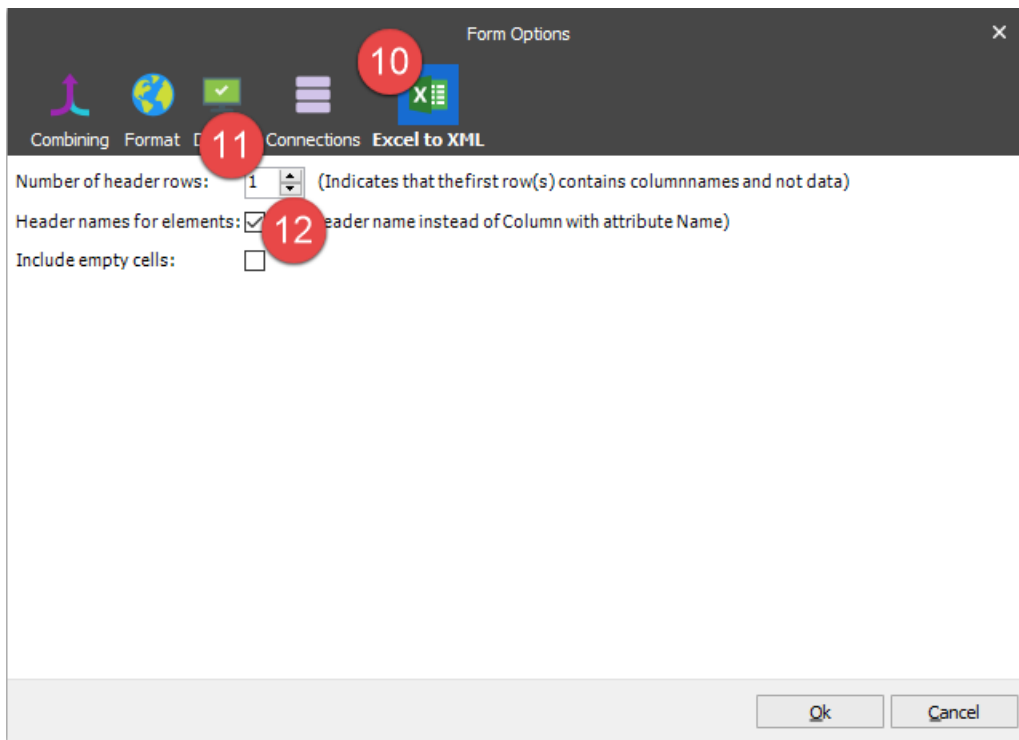
9. On the **Form** menu, click **Form Options**.



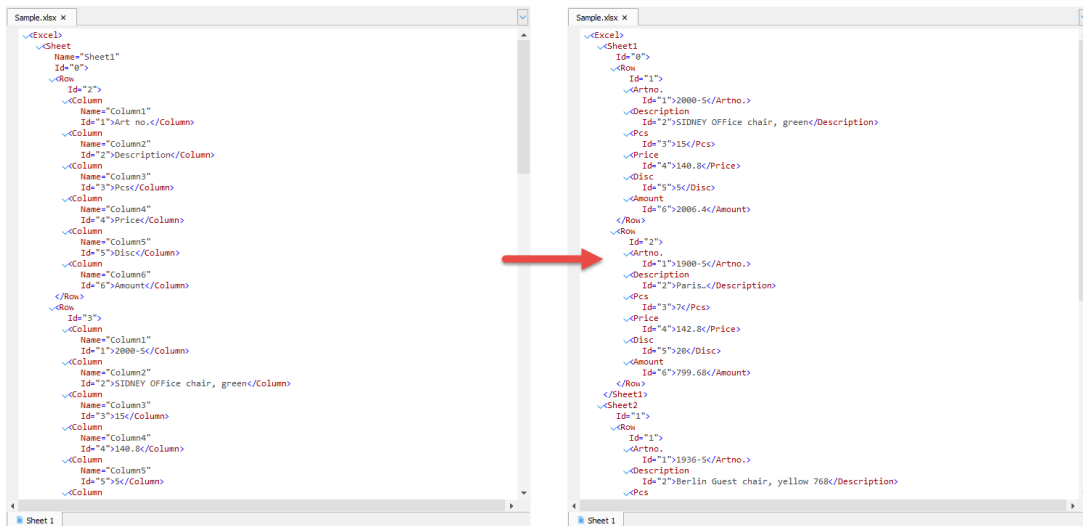
10. In the **Form Options** dialog displayed, switch to the **Excel to XML** tab.

11. Use the **Number of header rows** spin box to specify **1** as a value meaning that the first row(s) in the Excel spreadsheet is to be parsed as column name(s) and not as common data.

12. Select the **Header names for elements** check box meaning that a header name is to be used instead of the column name with an attribute.



See the picture below to compare the XML file structures before and after changing the form options:



Attachments

- [01.-XLS.Inconfigx \(20.09 KB\)](#)